

## VISUALIZING YEARS OF AGENCYWIDE HEALTH & ENV. DATA USING APPS

Join us to learn about apps developed for:

- Noting bacteria during floods at the Gulf of Mexico under a RARE Grant,
- Visualizing PM2.5 for Kampala, Uganda as an Embassy Science Fellow (ESF)
- Teasing out env. and health data relationships via a 2017 Presidential Early Career Awards for Scientists and Engineers

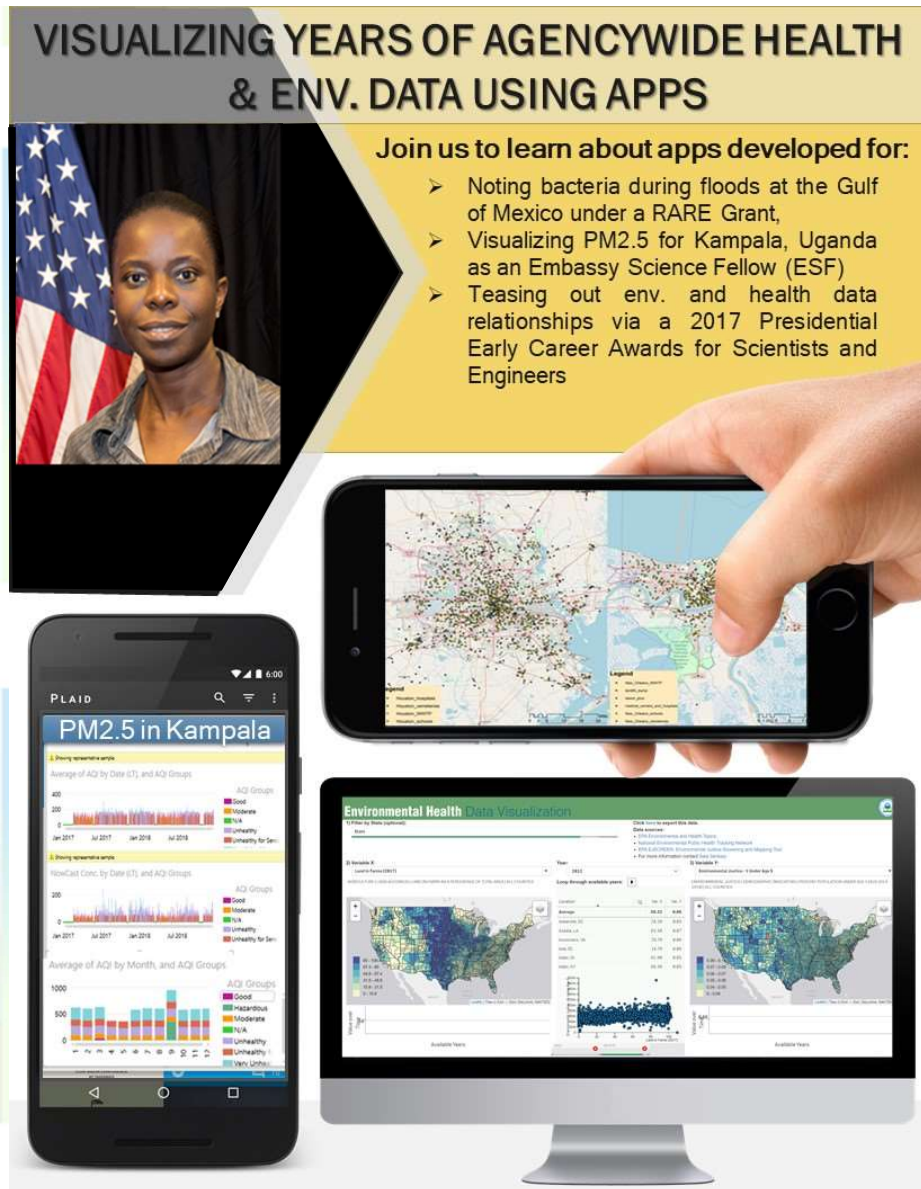


- **Sala N. Senkayi**, Ph.D., Senior Quality Assurance Scientist U.S. EPA - Region 7

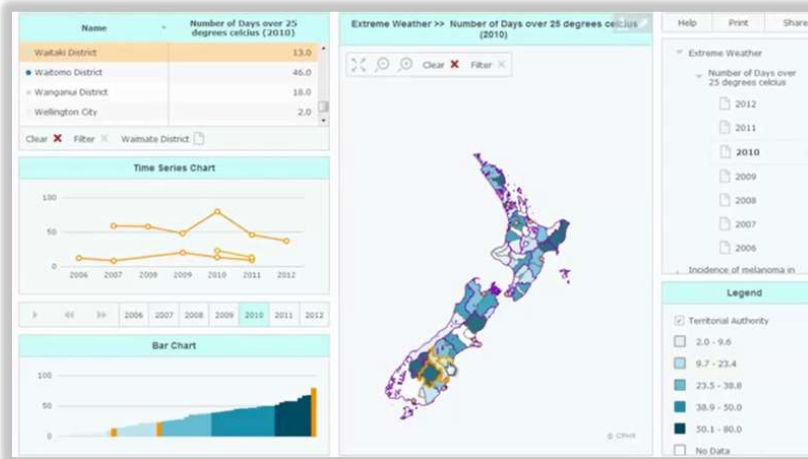
- **Subject Matter Experts —> thanks to all**

Visualization tools/apps allow you to view different query results at the same time. This does not mean or suggest that the data are related, and the results should not be interpreted in this way.

Agencies teamed up to better understand their data using apps in addition to using a multidisciplinary team approach. Noting these relationships can help address poor health (and any related cost) associated with environmental exposures.



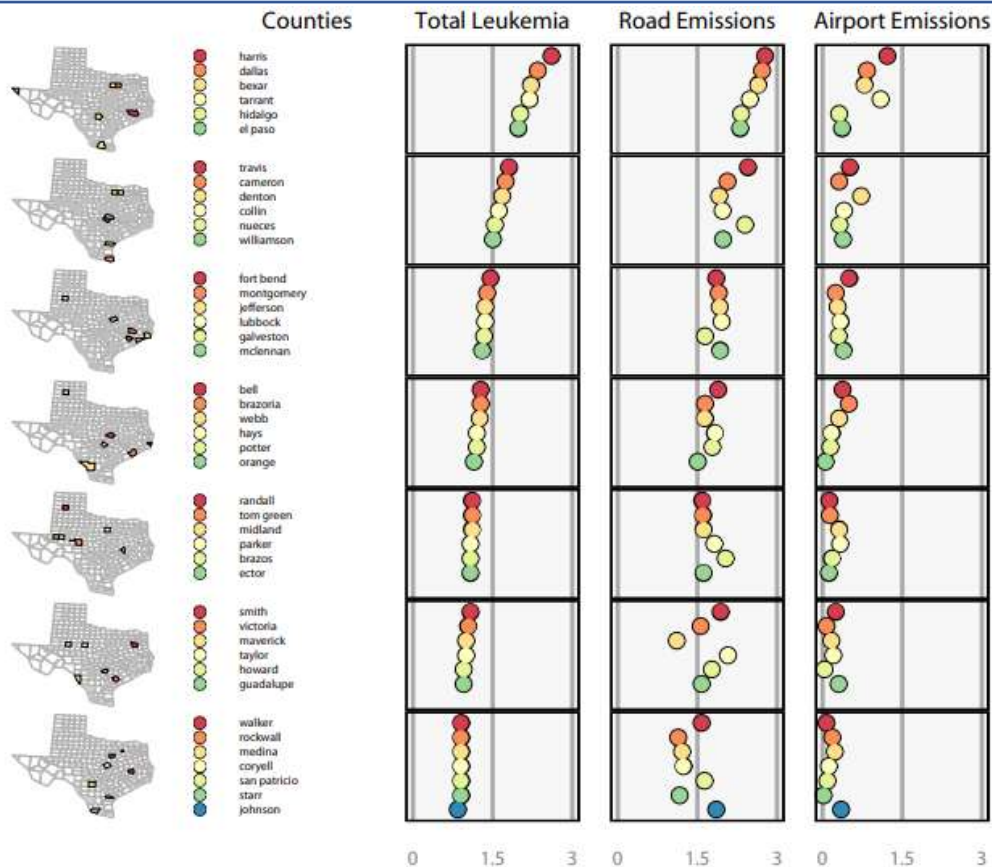
# Background & App/Vis Importance



←Option # 1-One Area

→Option #2- Two Areas





Marc H. Weber  
US Environmental  
Protection Agency

Michael G. McManus  
US Environmental  
Protection Agency

# Importance of Data Quality!

## *Environmental Health Topics Currently Covered by the National Tracking Network*

*Table 2. Topics and Content Areas Currently Covered by the Program*

Health Effects	Population Health	Environments
<ul style="list-style-type: none"><li>• Asthma</li><li>• Birth Defects</li><li>• Heat Stress Illness</li><li>• Reproductive &amp; Birth Outcomes</li><li>• Cancer</li><li>• Heart Disease</li><li>• Development Disabilities</li><li>• Childhood Lead Poisoning</li><li>• Carbon Monoxide Poisoning</li></ul>	<ul style="list-style-type: none"><li>• Population Characteristics (Census Data)</li><li>• Lifestyle Risk Factors</li><li>• Biomonitoring: Population Exposures<sup>5</sup></li></ul>	<ul style="list-style-type: none"><li>• Climate Change</li><li>• Community Design</li><li>• Housing Conditions</li><li>• Outdoor Air Quality</li><li>• Community Water Quality</li><li>• Pesticide Exposures</li><li>• Toxic Substance Releases</li><li>• Natural Disasters</li></ul>

←linked to data using  
an API connection.

- EJSCREEN Environmental Justice Screening & Mapping Tool
- EPA National Emissions Inventory
- EPA National Air Toxic Assessment
- Toxics Release Inventory (TRI)

→Added

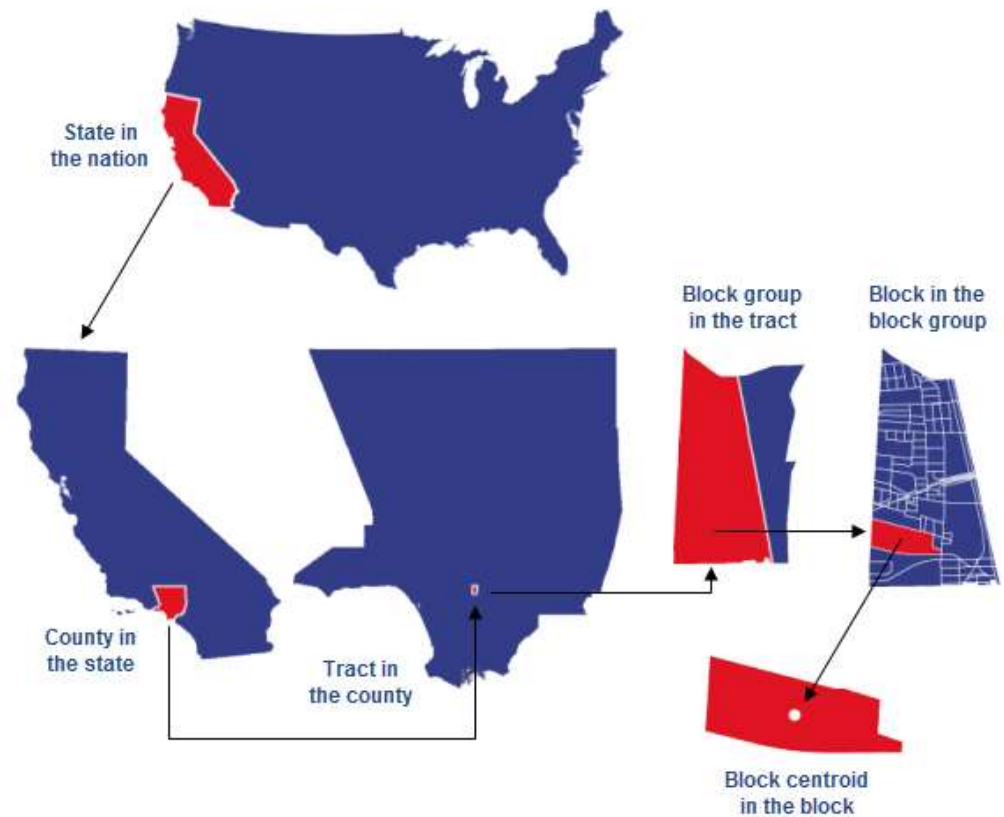
Cherokee Nation Lead and Radon

Arkansas Department of Health Blood Lead Levels

R6 Ozone Data

# Importance of Common spatial layers (US Census)

## United States census geography





# Regional Environmental Health Data Visualization App (REHD Vis App) Demo



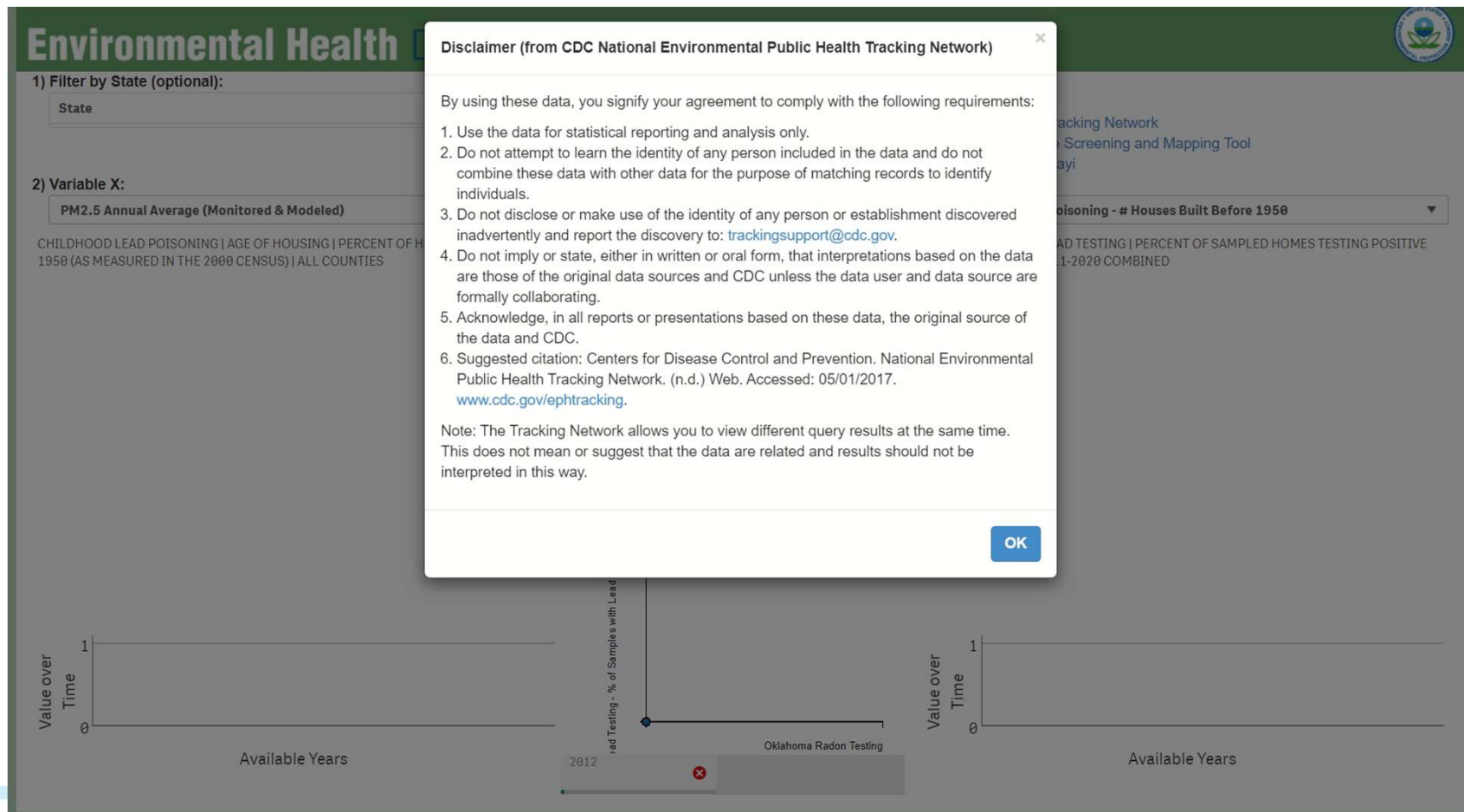
Dr. Bryan Chastain, EPA Contractor/Developer.  
National Geospatial Support Team/National Analytics  
Support Team, contractor to the U.S. EPA with GDIT



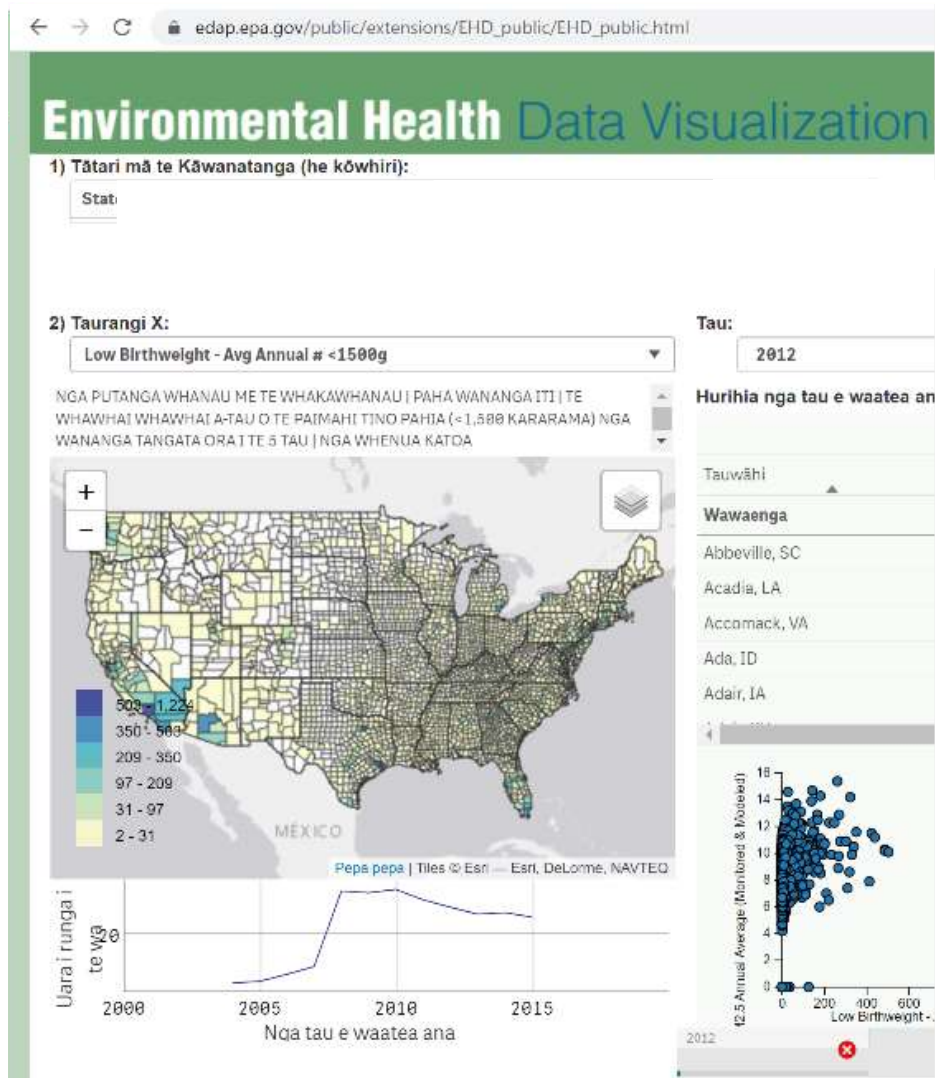
Dr. Sala N. Senkayi, U.S. EPA - Region 7  
Senior Quality Assurance Scientist



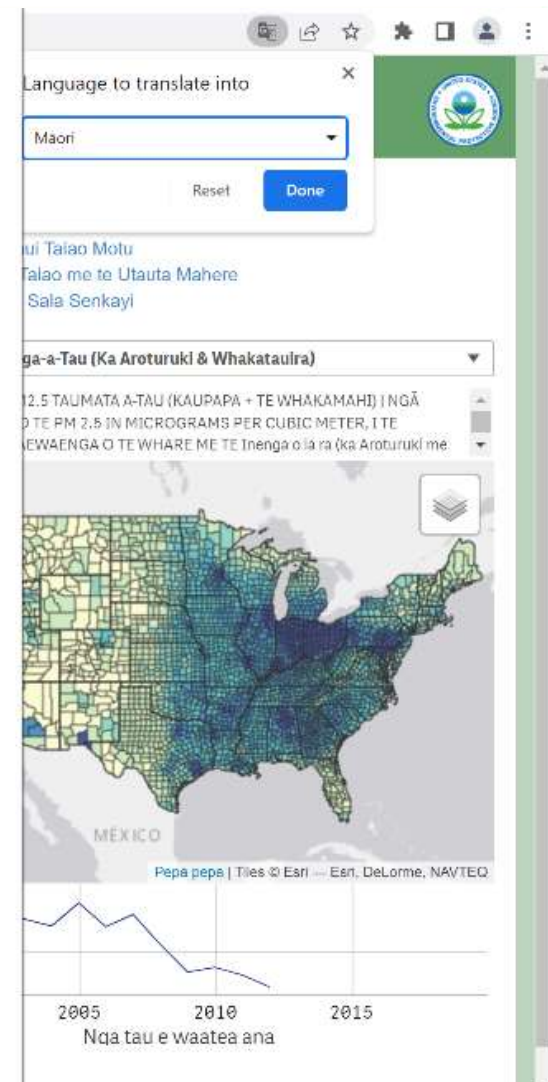
# Cherokee Nation Data

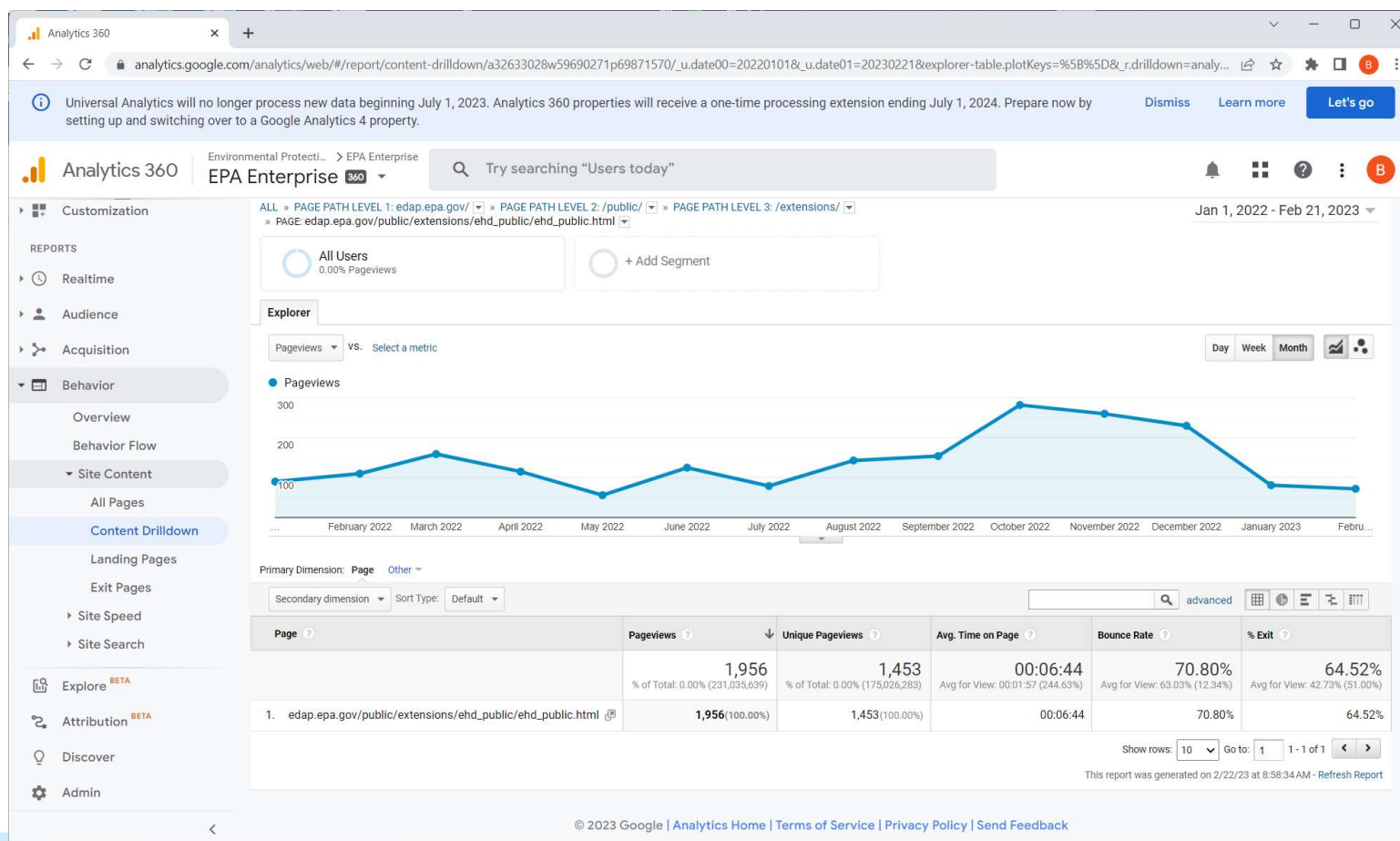






Albanian  
 Amharic  
 Arabic  
 Armenian  
 Azerbaijani  
 Bangla  
 Basque  
 Belarusian  
 Bosnian  
 Bulgarian  
 Burmese  
 Catalan  
 Cebuano  
 Chinese (Simplified)  
 Chinese (Traditional)  
 Corsican  
 Croatian  
 Czech  
 Danish  
 Dutch  
 English  
 Esperanto  
 Estonian  
 Filipino  
 Finnish  
 French  
 Galician  
 Georgian  
 German  
 Greek  
 Gujarati  
 Haitian Creole  
 Hausa  
 Hawaiian

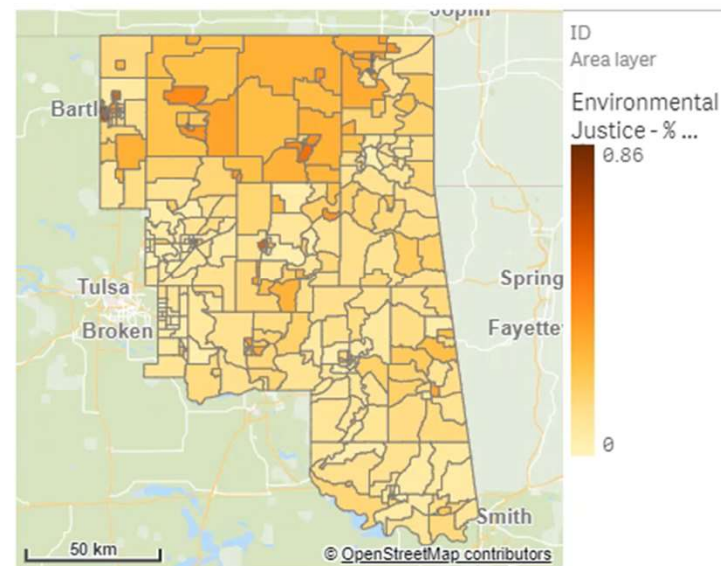




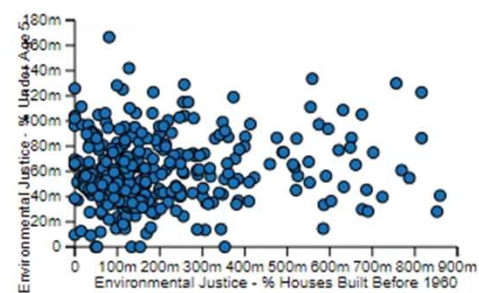
## Environmental Health Data Tool

### Environmental Justice - % Houses Built Before 1960

ENVIRONMENTAL JUSTICE | ENVIRONMENTAL INDICATORS | PERCENT OF HOMES BUILT BEFORE 1960 | ALL BLOCK GROUPS

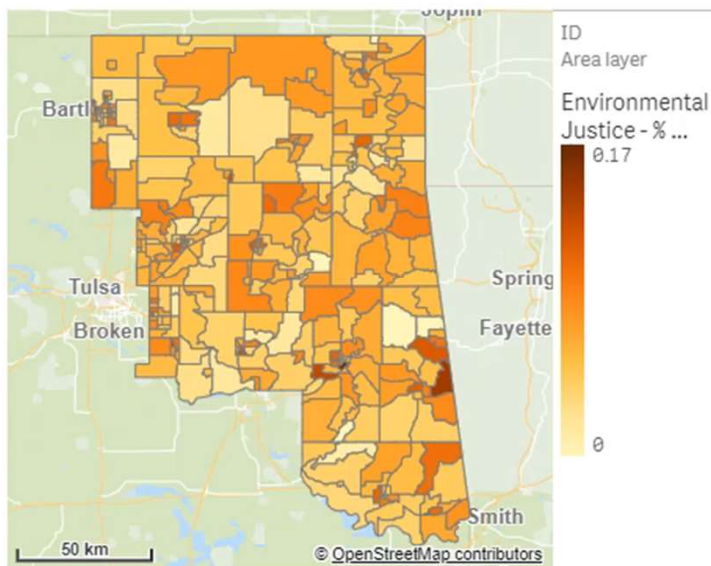


Location	Var. X	Var. Y
401470013005	0.13	0.06
401470013004	0.28	0.07
401470013003	0.08	0.09
401470013002	0.21	0.08
401470013001	0.31	0.01
401470012002	0.13	0.03
401470012001	0.15	0.04
401470011005	0.06	0.03
401470011004	0.40	0.09



### Environmental Justice - % Under Age 5

ENVIRONMENTAL JUSTICE | DEMOGRAPHIC INDICATORS | PERCENT POPULATION UNDER AGE 5 | ALL BLOCK GROUPS



Sources: EPA Environmental and Health Topics, CDC National Environmental Public Health Tracking Network, EJSCREEN: Environmental Justice Screening and Mapping Tool, EPA National Emissions Inventory, EPA National Air Toxics Assessment

[Export Table](#)

Open the Next Sheet within a New Tab to 1) select State(s) and/or Counties or 2) to view an Aggregated Time Series ->

# Benefits of Apps

- Used to identify **Gaps**
- Get us all on the same page (Agencywide **Consistency**)
- **Prioritize areas of interest** (Region/State/Agencywide)
- Bolstering **Tribal & EJ Community Resilience** (assist with noting communities that are marginalized, underserved, and overburdened by pollution) irrespective of your location
- Noting these relationships can **help address poor health** (and any related cost) associated with environmental exposures.
- Includes Maps/Trendlines/Chart/Data table (1980-2020)
- **Downloadable Data** via all 3 apps
- Thanks to Cherokee Nation (Shaun West et al.)



# Accolades



CDC/Radon

MIT University

Drexel University

New Zeland  
(Massey Univ)

Malaysia  
University

ITEC

R6, R2, R7, RSL

OECA/ORD &  
NATA

QA, OEJ, OITA,  
GIS, Lead (Pb)

Embassy Science  
Fellowship

New Mexico,  
Cherokee Nation,  
Arkansas,

President Award



# EPA Team Members as of 2023!



Charles Lee,  
Headquarters



Eric S. Hall,  
Principal Investigator (PI)



Chelsea Berg,  
Office of Research & Development



Dr. CarolAnn Gross-Davis,  
Region 3



Dr. Sala N. Senkayi,  
Region 7

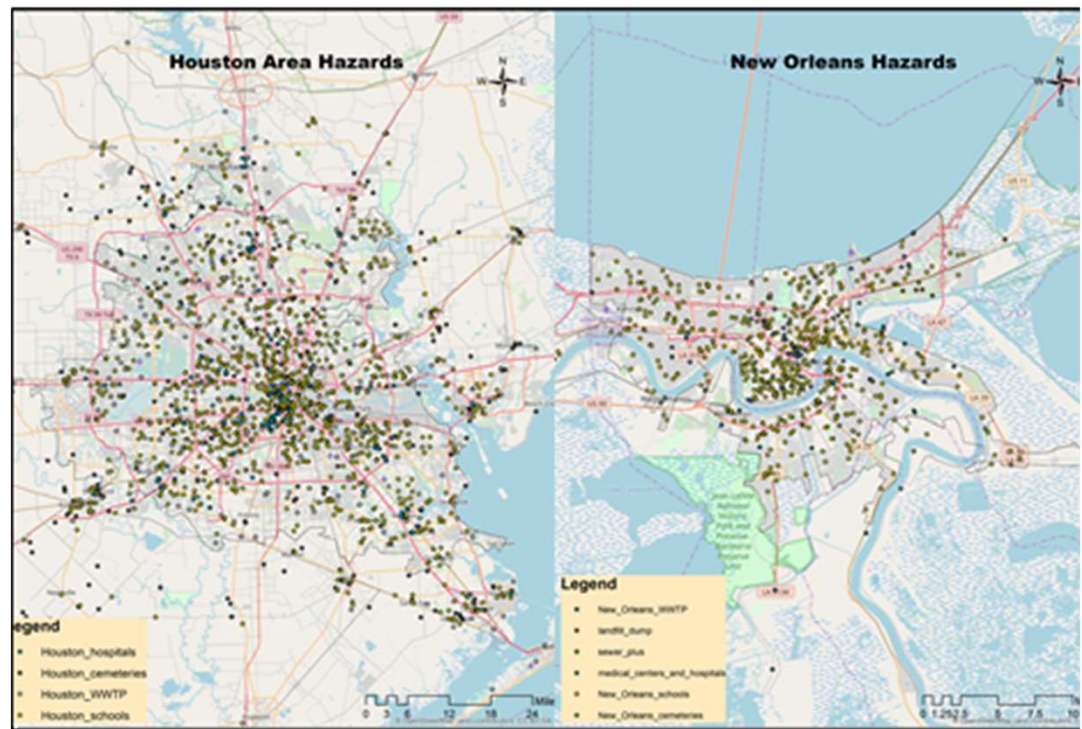


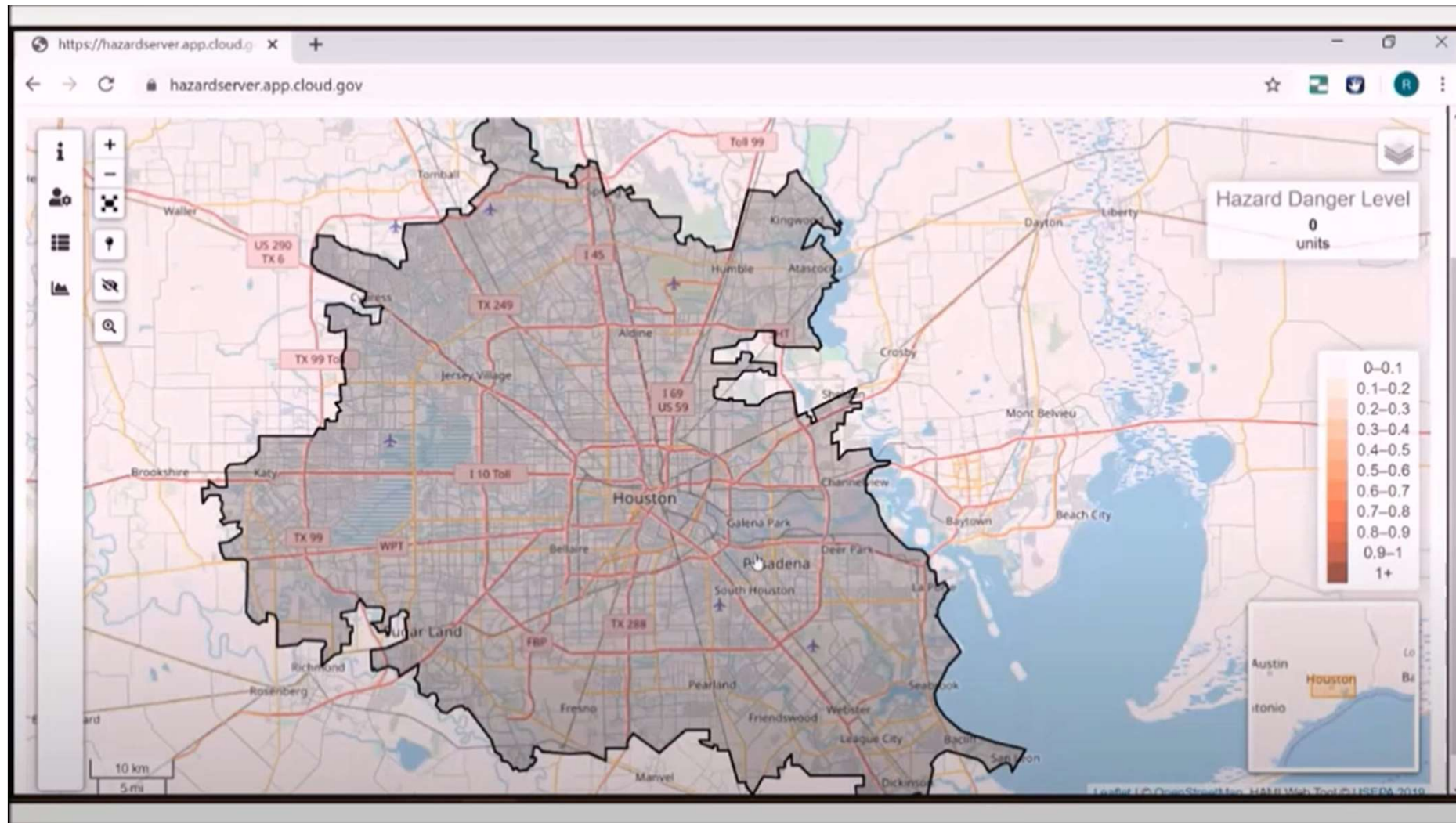
Dr. Eliodora Chamberlain,  
Region 7

# Bacterial Zones of Concern/Hotspots Office of Research & Development Webpage Tool

- John Eastman, EPA/ORD  
\*Developed App\*
- Kurt Wolfe, EPA/ORD  
[Wolfe.Kurt@epa.gov](mailto:Wolfe.Kurt@epa.gov)
- Dr. Rajbir Parmar, EPA/ORD  
[Parmar.Rajbir@epa.gov](mailto:Parmar.Rajbir@epa.gov)
- Dr. Mike Cyterski, EPA/ORD  
[cyterski.mike@epa.gov](mailto:cyterski.mike@epa.gov)
- Dr. Sala Senkayi, EPA/Region  
[Senkayi.Sala@epa.gov](mailto:Senkayi.Sala@epa.gov)

**2018 Team**



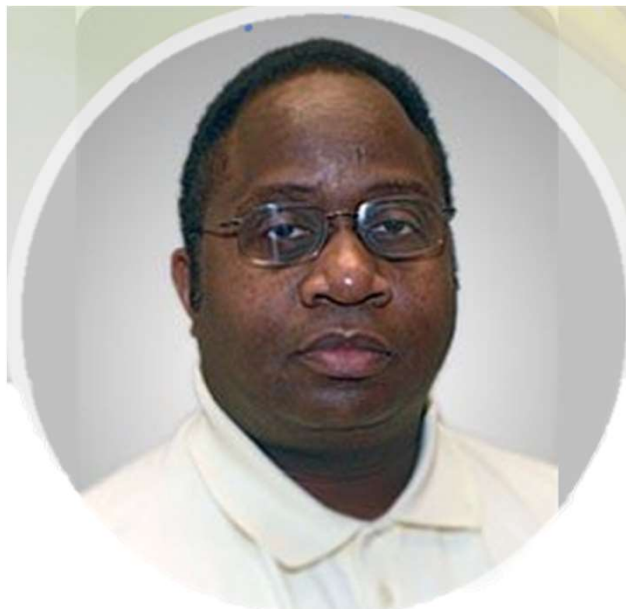


Zones of Concern – Hotspot Examples





Dr. Marirosa Molina,  
Research Microbiologist

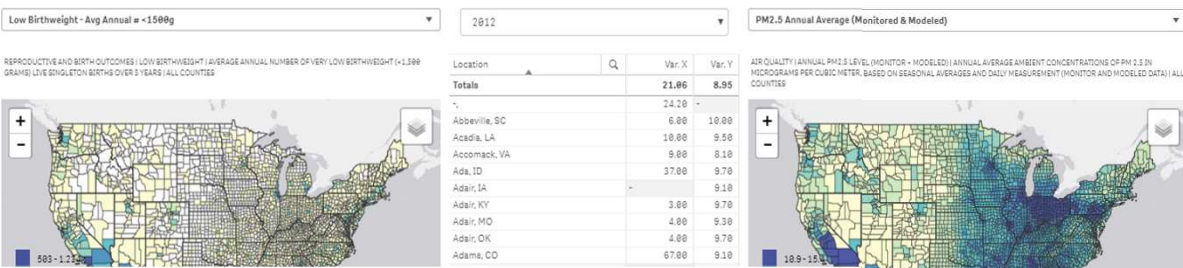


Eric S. Hall,  
Principal Investigator (PI)



Dr. Sala N. Senkayi,  
Region 7

2023 EPA Team Members!

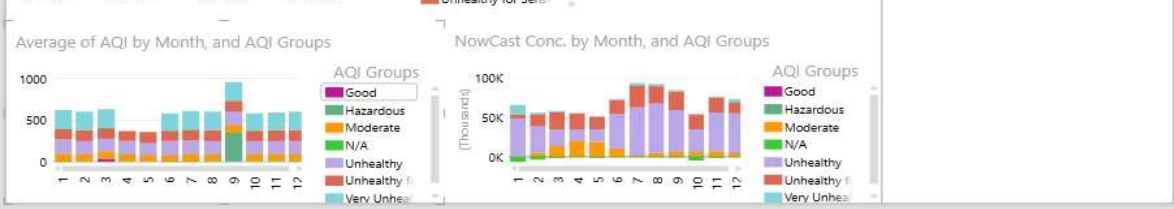
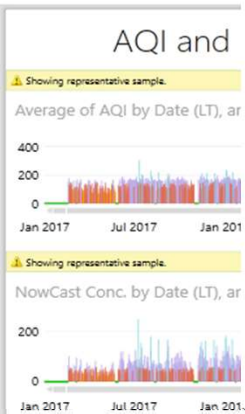
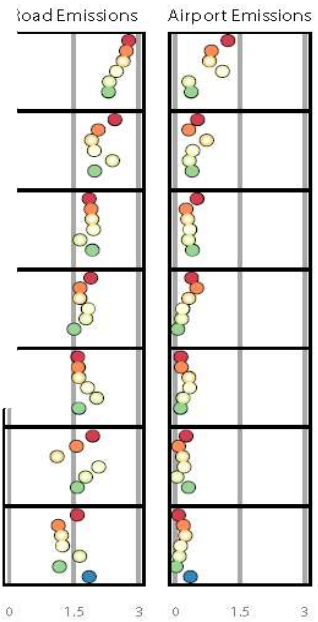


EPA Region 7 Science Program

Sala N. Senkayi, Ph.D.  
Senior Quality Assurance Scientist  
U.S. EPA - Region 7  
Laboratory Services and Applied Science Division (LAS)  
11201 Renner Blvd, Lenexa, KS 66219  
[senkayi.sala@epa.gov](mailto:senkayi.sala@epa.gov)

Click here to learn more about our [Quality Assurance Program!](#)

Seven Strong – Strength through Science  
#R7StrengthThroughScience





## Environmental Health Data Visualization

[https://edap.epa.gov/public/extensions/  
EHD\\_public/EHD\\_public.html](https://edap.epa.gov/public/extensions/EHD_public/EHD_public.html)



Source  
Assessment  
Mapping  
Interface  
Version 0.5.0

<https://hazardserver.app.cloud.gov/>

