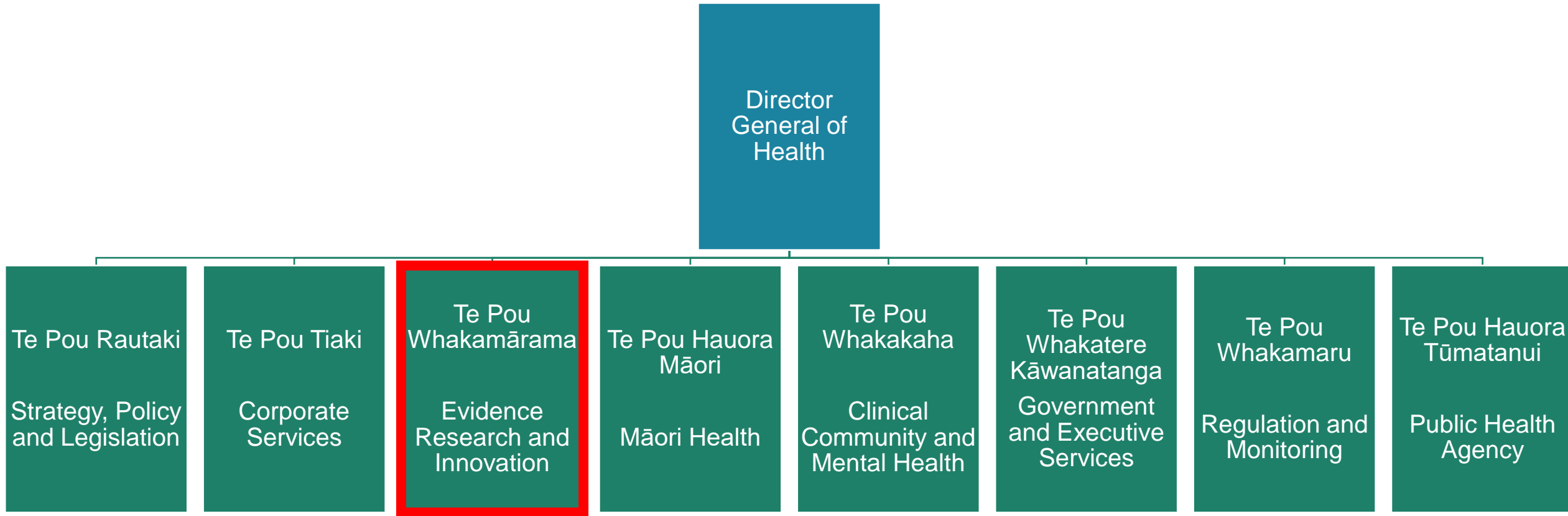


The Role of Evidence at the Ministry of Health | Manatū Hauora

Thursday 25 July 2024

Presented as part of the Public Health Observatory
New Zealand Conference 2024

The Reformed Ministry of Health



Te Pou Whakamārama
Evidence Research and Innovation

Horizon Scanning

Research and
Evaluation

Office of the Chief
Economist

Office of the Chief
Science Advisor

Evidence,
Research and
Analytics

The Public Health Agency

Te Pou Hauora Tūmatanui
The Public Health Agency

Hauora Māori
Tumatanui

Public Health
Policy and
Regulation

Public Health
Strategy and
Engagement

Pacific Health

Global Health

Emergency
Management

Intelligence
Surveillance
and
Knowledge

Office of the
Director of
Public Health

Science Advice

NOT GOVERNMENT POLICY – IN CONFIDENCE



Evidence brief:

Evidence informed decision-making: theory and practice

Office of the Chief Science Advisor

Te Pou Whakamārama | Evidence Research and Innovation Directorate

July 2023

Evidence Brief: Invasive Group A Streptococcus and skin infections

Office of the Chief Science Advisor,

Te Pou Whakamārama | Evidence Research and Innovation

March 2024

Evidence Brief:

Primary and Community Healthcare: Operating Model



Long COVID Evidence Update

Table of Contents

Long COVID Evidence Update	1
Document Summary	3
Introduction	5
Limitations	5
Long COVID terminology and definitions	6
Symptoms and Signs	8
Omicron	10
Epidemiology	11
Prevalence	11
Prevalence of long COVID in Aotearoa New Zealand	13
Aetiology	13
Similarities between long COVID and ME/CSF	14
Risk factors	15
Risk of long COVID after reinfection	16
Long COVID in children	17
Prevention through vaccination	18
Vaccination prior to infection	19
Vaccination after infection	20
Vaccine injury	21
Impacts	21

AI IN HEALTH: THIS IS A DISCUSSION DOCUMENT – NOT GOVERNMENT POLICY

Artificial Intelligence in Health: A stocktake of current applications



Horizon Scanning

- Future-focused Ministry
- Identification of issues, threats and opportunities over the longer term

Te pae tika:

e tūhura ana i ngā ara hou me ngā ārai ki te āta matapaetanga, te kauparenga atu, te kitenga me te rongoātanga o ngā take hauora ki Aotearoa

Precision health:

exploring opportunities and challenges to predict, prevent, diagnose, and treat health needs more precisely in Aotearoa New Zealand

Long-term insights briefing

August 2023



Academic Engagement

Engagement at the interface between science and policy, monitoring, and regulation

Aims:

- strengthen the Ministry's evidence-based decision making
- enhance the flow of information
- create professional development pathways

<https://ojs.victoria.ac.nz/pq/article/view/8018/7126>



Developing Māori and Pacific capacity and capability

Pilot Programme

- Developed after internal workshop and workshop held with Deputy-Vice Chancellors (DVCs) of Research
- Pilot activities have been focused on secondments into the Ministry.



Professor Punam Mangtani - London School of Hygiene and Tropical Medicine



Rangimahora Reddy - CEO of the Rauawaawa Charitable Trust
Ageing Well Fellow in collaboration with the Ageing Well National Science Challenge.



Professor Cris Print - University of Auckland
Sector liaison for genomics

Dr Jesse Whitehead - University of Waikato expert in equity focussed health geography and demography



Janina'ofa Galewski - University of Waikato PhD candidate co-hosted by ERI and the Pacific Health Team focus on Pacific rural health workforce

Thank you

tara.swadi@health.govt.nz

office.chiefscienceadvisor@health.govt.nz

Enhancing Knowledge Sharing Between Academics and Policy Makers in Aotearoa:

<https://ojs.victoria.ac.nz/pq/article/view/8018/7126>