

Number of Livestock by Type

HIGHLIGHTS:

- Livestock have a major effect on the environment
- There were 42 million livestock in New Zealand in 2013
- The number of livestock declined 17% during 2002 to 2013



Source: http://woolshed1.blogspot.co.nz/2010/03/breeding-sheep-to-eliminate-dags-and_7781.html

Livestock have a major effect on the environment

Animals such as cattle, sheep and deer which are farmed for agriculture purposes have a very important role in the New Zealand economy. However, agricultural use of the land can have a major effect on the environment. For example:

- the run-off of effluent into water sources can affect water supply quality
- the land used for dairy cattle farms consumes a great deal of water thus affect the water supply levels
- the methane (CH₄) produced by dairy cattle can contribute to the climate change

There were 42 million livestock in New Zealand in 2013

In 2013, there were 42 million livestock (including sheep, dairy cattle, beef cattle and deer) in New Zealand. Sheep were the predominant livestock, accounting for 73% of total in 2013. The number of dairy cattle increased by 1% during 2012-2013, compared to a decline in the number of other livestock.

Table 1: Number of livestock in New Zealand, by type, 2012-2013

Livestock Type	Number of livestock (000s)		2012-2013 % change
	2012	2013	
Sheep	31,262	30,787	2 ↓
Dairy cattle	6,446	6,484	1 ↑
Beef cattle	3,735	3,699	1 ↓
Deer	1,061	1,028	2 ↓
Total	42,504	41,998	-1 ↓

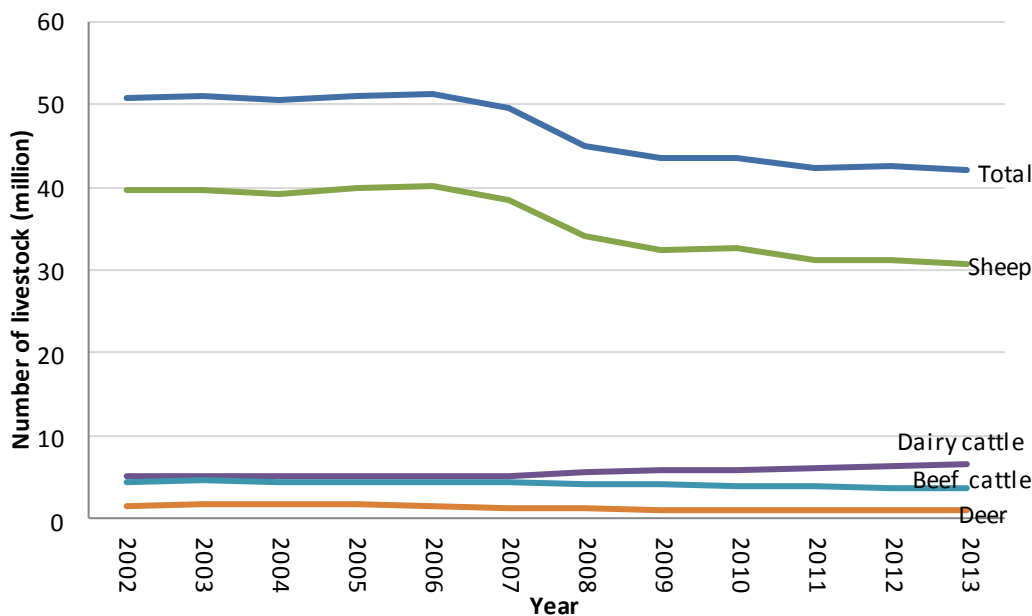
Note: Year to 30 June.

Source: Statistics New Zealand: Agricultural Production Statistics: June 2013 (2014)

Total livestock declined 17% from 2002 to 2013

Between 2002 and 2013, there was a 17% decline in the total livestock in New Zealand. Despite a decline of 22% in sheep numbers, sheep continued to comprise the majority of livestock in New Zealand. The number of dairy cattle has increased over a quarter in the 12-year period. (Figure 1)

Figure 1: Number of livestock in New Zealand, by type and year, 2002-2013



Note: Year to 30 June. Numbers for 2008-2011 are based on agricultural production sample surveys, and are therefore subject to sample bias.

Source: Statistics New Zealand: Agricultural Production Statistics and Five-Yearly Agricultural Census (2014)

For more information, please contact Fei Xu on f.xu@massey.ac.nz

REFERENCES

- Statistics New Zealand. (2014). Agricultural Production Census.
- Statistics New Zealand. (2014). Annual Agricultural Production Statistics.