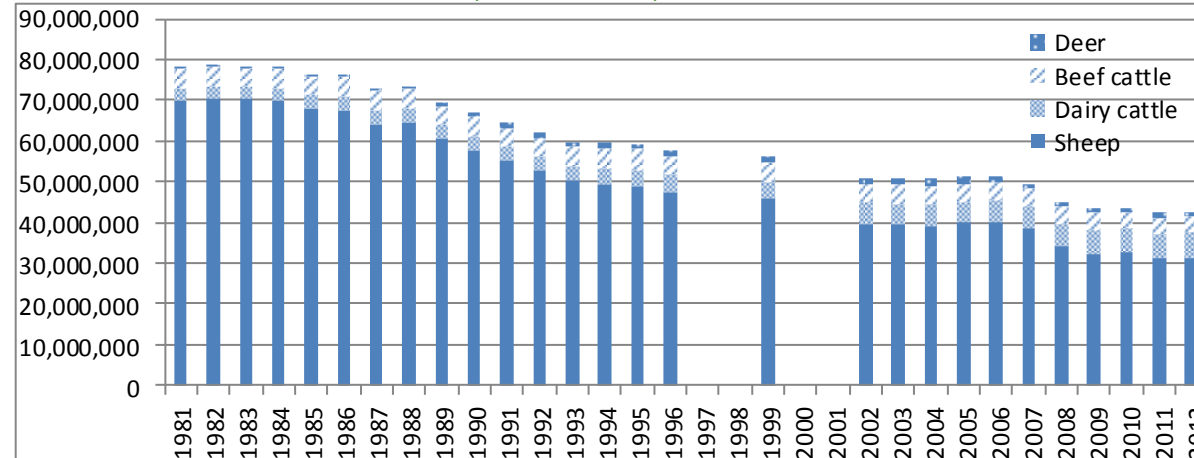


Number of Livestock by Type in New Zealand

FIGURE 1: NUMBER OF LIVESTOCK IN NEW ZEALAND, BY TYPE AND YEAR, 1981-2012.



Note: An asterisk (*) indicates that data was unavailable for that year. Livestock only includes dairy cattle, beef cattle, deer and sheep. Year to 30 June. Numbers for 2008-2011 are based on agricultural production sample surveys, and are therefore subject to sample bias. Source: Statistics New Zealand (2012)

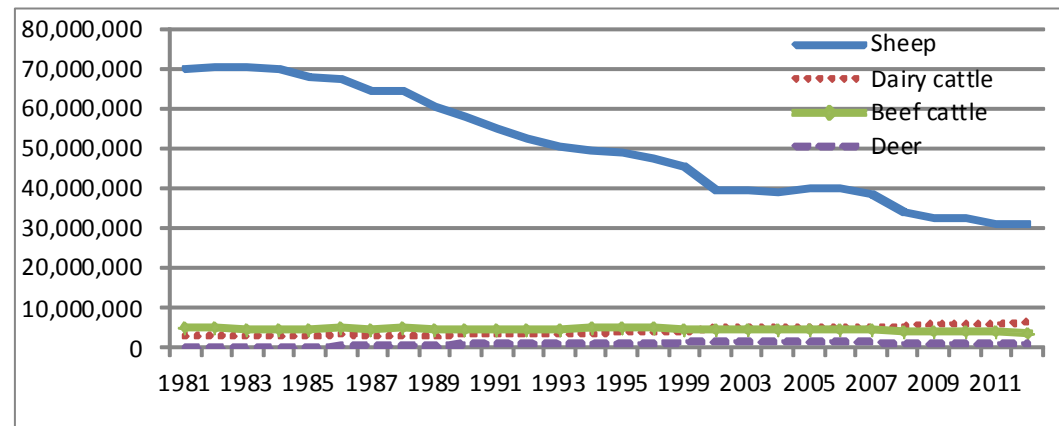
Between 1981 and 2012, there was a 46% decline in the total livestock (including sheep, dairy cattle, beef cattle and deer) in New Zealand (figure 1).

Despite the number of sheep declining by 55% during this period, sheep continued to comprise the majority of livestock (figure 1&2).

The number of beef cattle also declined during this period, at an average of 1% per year (figure 2).

In contrast, the number of dairy cattle increased over the period. In 1981, there were less than 3 million of dairy cattle, but by 2012, there were over 6.4 million (figure 2). In 1981, dairy cattle accounted for less than 4% of total livestock, compared to 15% of total livestock in 2012 (figure 1).

FIGURE 2: NUMBER OF LIVESTOCK IN NEW ZEALAND, BY TYPE AND YEAR, 1981-2012. EXCLUDING MISSING YEAR



Source: Statistics New Zealand (2012)

HIGHLIGHTS:

- Between 1981 and 2012, there was a 46% decline in the total livestock in New Zealand.
- Despite the number of sheep declining, sheep continued to comprise the majority of livestock.
- In contrast, the number of dairy cattle had increased over the period.

REFERENCES
• Statistics New Zealand 2012. Annual Agricultural Production Surveys, and five-yearly Agricultural Production Census.

CONTACT:
Fei Xu
f.xu@massey.ac.nz