

Average Age of Vehicles in New Zealand

The average age of all types of New Zealand vehicles is between 11 and 15 years, light passenger and commercial vehicles approximately 12 years, heavy commercial vehicles about 14 years, and buses approximately 15 years (Figure 1) (Ministry of Transport 2012). The pattern has not changed substantially in the past twelve years. In contrast, the average age of motorcycles has decreased from 15 years in 2000 to about 12 years in 2012 (Ministry of Transport 2012).

INTERNATIONAL COMPARISONS

The latest available international data shows New Zealand has an older vehicle fleet than the other countries shown (Figure 2). The average of vehicle fleet in New Zealand has increased from 12 years in 2008 to 13 years in 2012. Between 2002 and 2012, the average age of vehicles in New Zealand was approximately 12 years, compared to about 10 years in Australia and the USA, and 8 years in Canada (Ministry of Transport 2012).

FIGURE 1: AVERAGE AGE OF VEHICLE FLEET IN NEW ZEALAND, 2000-2012

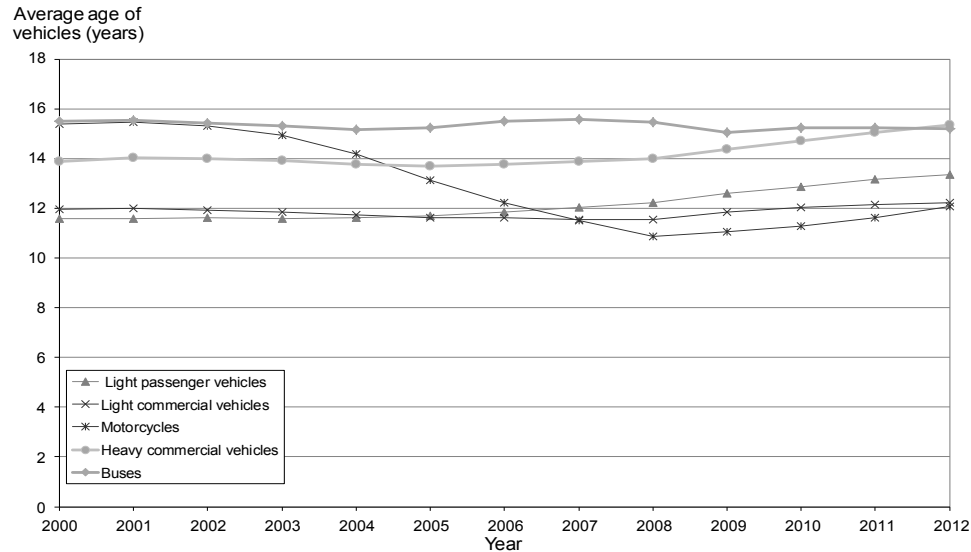
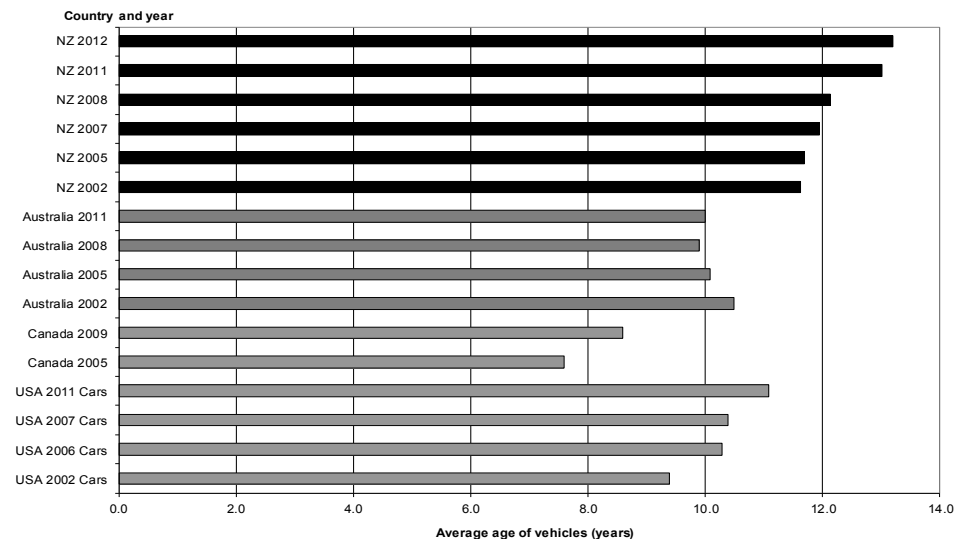


FIGURE 2: AVERAGE AGE OF VEHICLE FLEET (YEARS), INTERNATIONAL COMPARISONS, 2002-2012



HIGHLIGHTS:

- Average age of vehicles in New Zealand is 11-15 years
- The oldest types are buses and heavy commercial vehicles
- New Zealand has an older vehicle fleet than Australia, Canada, and the USA

REFERENCES

- Kjellström T. (2004). Air Quality and Health. In: Cromar N, Cameron S, Fallowfield H. (eds.). Environmental Health in Australia and New Zealand. Melbourne: Oxford University Press:274-92.
- Ministry of Transport. (2012). The New Zealand Vehicle Fleet. Wellington: Ministry of Transport.

CONTACT:

Helene Marsters
t.h.marsters@massey.ac.nz